



CONSERVATION

Your ultimate guide to water efficiency

WATER-WISE LANDSCAPING

Local water use during summer months is often more than three times higher than winter water usage levels, with most of the increase being tied to irrigation of landscapes.

Follow these 7 principles for a healthy and functional water-wise landscape:

- Proper planning and design
- Practical turf areas
- Appropriate plant selection
- Soil improvement
- Efficient irrigation
- Uses of mulch
- Appropriate maintenance

SPRINKLER EVALUATION PROGRAM

Evaluations are offered during the summer months and consist of a comprehensive assessment of the design, operation and management of your sprinkler system. Assistance with sprinkler controllers and watering schedules will also be provided. A brief report outlining general observations of your sprinkler system as well as suggestions for future use will be mailed following the evaluation. This is a great opportunity to learn ways to save water and money while still maintaining a healthy and attractive landscape.



WATER-WISE PLANTS

There are many attractive plants that can thrive on limited amounts of water. In a climate that lacks reliable summer precipitation, use of these plants can help create a beautiful landscapes with reduced effort and irrigation. We've gathered a list of "water-efficient" plants that are suitable for the Rogue Valley.

FOR MORE INFO VISIT OUR WATER-WISE GARDENING WEBSITE

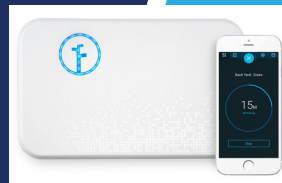
SPRINKLER CONTROLLER BASICS

Sprinkler controllers are the command center for the entire irrigation system, but often have many features that are misunderstood or not utilized. When the timer is properly set, the landscape health can be enhanced while saving thousands of gallons of water each month. It is important for property owners to understand how to operate the timer and to realize that the timer is not a "set it and forget it" tool. Rather, watering schedules should be modified throughout the sprinkling season.

"not a 'set it and forget it' tool"

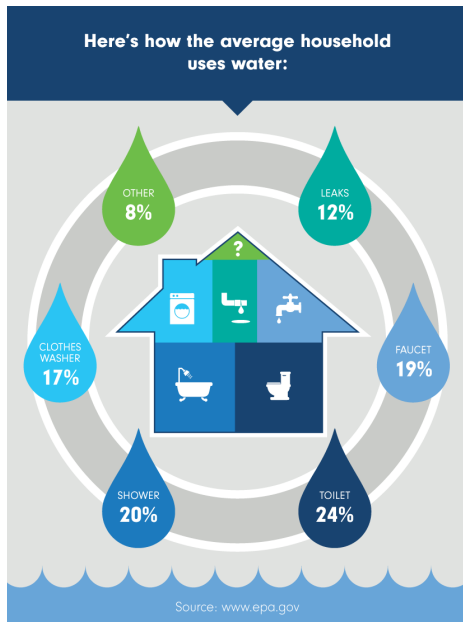
TOILET REBATE PROGRAM

In an average home with older plumbing fixtures, nearly one-third of the water used indoors is flushed down toilets. In order to keep more water from going down the drain, Medford Water offers rebates to help property owners replace their old relics with new low-flush models.



SMART CONTROLLER REBATE PROGRAM

Residential outdoor water use in the United States accounts for more than 9 billion gallons of water each day, mainly for landscape irrigation. Experts estimate that as much as 50 percent of this water is wasted due to overwatering caused by inefficiencies in irrigation methods and systems. Irrigation control technologies can significantly reduce overwatering by applying water only when plants need it.



SAVING WATER INDOORS

The average single family residential customer in Medford uses around 5,000 gallons of water per month indoors.

KITCHEN

Avoid letting the water run when rinsing vegetables, cleaning dishes, or defrosting food.

LAUNDRY ROOM

Wait until you have full loads to wash.

BATHROOM

Taking shorter showers and avoid letting the water run while brushing your teeth or shaving.

FOR MORE INFO VISIT OUR WEBSITE MEDFORDWATER.ORG



CONTACT US

Cody Scoggins | Water Efficiency Coordinator

Aaron Adachi | Water Efficiency Technician

Phone: 541-774-2436

Phone: 541-774-2438

Email: cody.scoggins@medfordwater.org

Email: aaron.adachi@medfordwater.org